

# American Feng Shui Institute

## CA101 – Beginning Face Reading

AMERICAN  
FENG SHUI



INSTITUTE

## **Online Class/E-Book License Agreement**

The American Feng Shui Institute agrees to grant, and you (the person who has purchased the online class in e-book form) agree to accept, a non-exclusive, non-transferable license to install and use the e-book or e-class under the following terms and conditions:

1. **Installing Onto Your Computer.** You may download or install the e-book onto your computer. You may make reasonable back-up copies of the e-book to avoid losing it. You may not give or transfer copies of the e-book to others, or make the e-book available for others to copy or download.
2. **Printing.** You may print the e-book for your personal use. You may not give or transfer printed pages from the e-book or the entire printed e-book to others.
3. **Copyright, Use, and Resale Prohibitions.** All content in the e-book is copyrighted under the U.S. Copyright laws, and the American Feng Shui Institute owns the copyright and the e-book itself. Other than as stated in this License Agreement, you may not copy, print, modify, remove, delete, augment, add to, publish, transmit, transfer, sell, resell, create derivative works from, or in any way exploit any of the e-book's content, in whole or in part, and you may not aid or permit others to do so. You shall not: (1) rent, assign, timeshare, distribute, or transfer all or part of the e-book or any rights granted by this license agreement to any other person; (2) duplicate the e-book, except for reasonable backup copies; (3) remove any proprietary notices, labels, or marks from the e-book; (4) transfer or sublicense title to the e-book to any other party.
4. **Liability.** The unauthorized use or distribution of copyrighted or other proprietary content is illegal and could subject the purchaser to substantial money damages. Purchaser will be liable for any damage resulting from any violation of this License Agreement, including any infringement of copyrights or proprietary rights.
5. **Professional Services.** This e-book is designed to provide accurate and authoritative information in regard to the subject matter covered. A license to use the e-book is sold with the understanding that the publisher is not engaged in rendering legal, accounting, or other professional service. If legal advice or other expert assistance is required, the services of a competent professional should be sought.
6. **Without Warranty.** The American Feng Shui Institute does not guarantee that the information in this e-book is error-free, or warrant that the e-book will meet your requirements or that the operation of the e-book will be uninterrupted or error-free. The e-book is provided "as is" without warranty of any kind, either express or implied or statutory, including, without limitation, implied warranties of merchantability and fitness for a particular purpose. If the e-book was purchased in the United States, the above exclusions may not apply to you as some states do not allow the exclusion of implied warranties. You may also have other rights that vary from state to state.
7. **Risk.** The entire risk as to the results and performance of the e-book is assumed by you. In no event will the American Feng Shui Institute be liable for any damages, including, without limitation, incidental and consequential damages and damages for lost data or profits arising out of the use or inability to use the e-book. The entire liability of the American Feng Shui Institute shall be limited to the amount actually paid by you for the e-book license.
8. **Your Agreement.** Your use of the e-book constitutes your agreement to the above terms and conditions.

By downloading this e-book, I agree and accept the above License Agreement. (If you do not agree, please close this page and contact the Institute at 626-571-2757.)

# How the online class works:

If you have taken prior online classes with the Institute, this online class works a little different. The class material is now in a PDF format. This means that you will download the class as part of the enrollment process and read the class material in your Adobe Acrobat Reader, available for free at <http://www.adobe.com/products/acrobat/readstep2.html> .

Please read the material in the PDF format. While you are doing so, if you have questions, you may ask them (for up to 60 days from the date of enrollment) at the class forum. The class forum is located at:

<http://www.amfengshui.com/bb/viewforum.php?f=28>

If you are having technical difficulties (such as lost passwords, being unable to view the PDF or you have problems with your computer and the forum), please use the following Help Desk forum:

<http://www.amfengshui.com/bb/viewforum.php?f=14>

If you need anything Administrative, please email [fsinfo@amfengshui.com](mailto:fsinfo@amfengshui.com) This can include time extensions, payment questions, Certificate questions, etc.

Thank you for enrolling and we hope you enjoy the class!



# Face Reading Class # 1

© 2005 American Feng Shui Institute



© 2005 American Feng Shui Institute

Welcome to the Face Reading Class 1. Face reading techniques are not the same as doing a Feng Shui reading. There is a different set of rules and methods. It is one of the oldest prediction techniques in Chinese culture. Face Reading is not so prevalent in the West, but in Asia, it is seen in many books. Even in Japan, a lot of books discuss these topics, but they were derived from Chinese teachings.

Face reading shows differences with life quality change. A person in a honeymoon compared to a person in a stressful job look completely different. Face reading indicates these changes even within a couple of months.

The face is like a map. It can reveal a lot about a person. Just look at the nose. A lion's nose is wide and thick. Should a person have a lion's nose, they can become well-known. Another type of nose is the 'garlic' nose. If the person has a high position, they should have a garlic nose. A garlic nose person can accumulate a lot of money. A nose that sticks out and is pointed, indicates people who are good in accounting.

The eyes are also a good indication of the person's nature. You can always see if there is truth behind someone, by observing the eyes. When you ask someone a question, and they look away, when they answer, then you can suspect the answer they give. The eyes tell everything. The eyes never lie. Even in the West, it is said that the eyes are the windows to the soul.

Face reading contains a lot of general information that you can try out for yourself. Play

with this study. Practice with friends and see if it holds true. You may just be amazed! For example, if a person has hard or stiff earlobes, then he/she would tend to be stubborn. A person with a soft and flexible earlobe indicates that they can easily be pursued by others. So let's dig into the information and learn more.



## The Five Arts

- Medicine
- Divination ( Hexagrams from the Yi Jing)
- Astrology (Also called the Solar System)
- Readings (The image of the face, palm, and Feng Shui house readings)
- Mountains (find your wisdom and retire)

© 2005 American Feng Shui Institute

To begin, it is important to understand that there are five arts in Chinese Study:

1. Medicine
2. Divination
3. Astrology
4. Readings
5. Mountains

These are the paths an apprentice should learn in order to become a wise man in early Chinese culture. Each one is to be mastered. Each one in its own right can be a lifetime study. People would focus on these five arts throughout their life. Once they learned enough, they would then go to the mountain to meditate and retire.

Medicine refers to Chinese medicine, such as herbology or acupuncture. Acupressure is another form a Chinese Medicine. This was usually the first path of study. Today, most people start with Feng Shui, but in old China, people began by studying medicine. Face reading is actually part of Chinese medicine as well. An experienced practitioner, can look at a face and see if there are any problems with the kidneys or other vital organs.

Divination refers to Yi Jing calculations. By using the hexagrams of the Yi Jing, you can determine one's fate. The Yi Jing also allows you to divine questions about upcoming events. For example, you want to know if you should invest in a new opportunity. By posing the question and either throwing coins, or stalks, you can find the hexagrams of the Yi Jing for the answer. It may seem random, but after practicing this for a while, you see that there is a destined outcome to the hexagrams. In fact, if you ask too many times on the same question, you may end up with Hexagram 4. This is the hexagram Immaturity. This hexagram instructs you to recognize your ignorance and be humble in order to learn.

Astrology includes the practices of Four Pillars (Ba Zi), Zi Wei Dou Shu (12 Animals), Iron Board, and others. Astrology is difficult to go into, but once you begin this study, you can learn it step-by-step. Astrology can predict events to the exact minute. With face reading however, you can predict very surprising things. Face reading also shows destiny. The fact that you are reading this material is your destiny. Often there are things that do not show up in astrology but do show up in face reading. Face reading is a kind of statistical analysis.

The category of "Readings" covers seeing and interpreting the image of the face, palm, and the environment (house). These reveal the nature of what is going on with a person or within the home. Face reading fortunately is one of the arts that is easy to delve into. However, it can become very difficult to advance beyond the basics. There are few masters who can teach the deeper levels and they teach mostly based on experience. Palm reading is another form of reading that shows a person's life map in their hand. This is a fascinating study that shows periods of fortune and difficulty etched into the hand.

Feng Shui is another form of reading. This is the reading of the home and the environment. Reading the home and applying remedies can help you manipulate your environment to make your current situation more favorable.

Going to the mountain means to retire. The more you know of the five arts, the more wisdom you gain. But once you gain this wisdom, it is best to take that time to retire. This is the time to meditate and seek deeper spiritual wisdom. In the old days, learned men would go to the mountain to meditate, learn qi gong, and work at becoming an 'immortal.'



## Face Reading

- **Face Reading is like a map giving a rough idea of a person's life.**
- **Face reading is probably older than Feng Shui.**
- **If something shows on both the face and palm, it is usually quite accurate.**

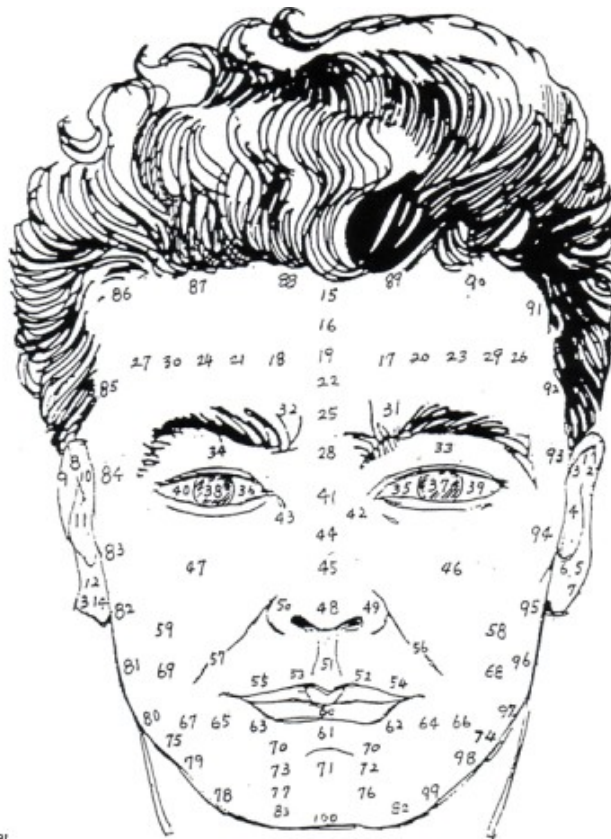
© 2004 American Feng Shui Institute

Face reading can be used to examine a person's character, their feelings, their hidden desires, their worries, their health, and their mood. Without knowing face reading, it is pretty easy to see someone's mood in their face. Going beyond that, you can gain insight into people's lives from their face. Worry lines are a simple example of face reading. Certain features such as the shape of their nose can indicate one's character. Looking at other areas of the face can even reveal hidden romances!

Face reading is a great way to identify people's characteristics before you actually interact with them. For example, if you meet someone in a business setting, by looking at their face, you can see if they are truthful, stubborn, deceptive, or inflexible. Use face reading as a tool to understand people's nature.

Since many of our feelings appear on our face, the face can show if you are having difficulties in your relationship, or even problems with your staff at work. The way to change the appearance of our face is to change our internal moods and our heart.

Always treasure those around you and appreciate them. They are in your life due to your destiny. The Dao tells us that there is nothing right or wrong. The Dao is the principle of "no principles. Be calm and do not hate. If you follow this, you can change your life. Using Feng Shui can help your life by changing your environment, but more than external Feng Shui, it is important to Feng Shui yourself. Always be satisfied with what you have. If you don't hate others, then you will be happy. This will be reflected on your face.



© 2005 American Fet...

P.1

The diagram above indicates the age related to areas of the face. It is important to remember that the years shown on the chart are in Chinese years. This means that in Chinese thought, a person is born at age one (1). The Chinese look at the 9 months in the womb as one year. So when you are looking at a person's face, add a year to their Western age to match the chart.

These numbers indicate the years of one's life shown on the face. If there is a blemish at a particular part of the face, such as a mole or scar, then this usually indicates a problem during that time period. In fact, moles on the face are generally not good. A mole on the body is okay though. If a person has a scar or an ugly freckle at the tip of their nose for example, they will have a difficult or traumatic period at age 48.

One thing to remember is that the left side relates to the male. The drawing depicts a male. The right side refers to the female. This will become even more important later in the course. Looking at the nose, if the nose is to the left side, the father dies first. If it is angled to the right, then their mother will die first. When counting up, the male ages begin at the left ear and the female ages begin at the right ear. The above diagram is that of a male. For a female, you would reverse the left and right age indicators. So for a male, age 34 is above the right eye. A female would have age 34 shown above the left eye. Left and right is determined by the person's left or right, not yours.

Take a look at your own face, do you have any moles or scars? What age do they represent? Do not worry, but be aware that you need to be prepared for a challenge during the time period.

Many people ask if by removing a mole, can you change this fortune? Experience has



shown that it is possible that by removing a mole one can change their fortune. The fact you are now aware and can do something about it, can lead to a favorable effect on the outcome.



## Qi

- Qi represents “life energy”
- Qi is indicated by the color or brightness of the face
- Favorable qi is indicated by shininess
- Unfavorable qi is indicated by darkness

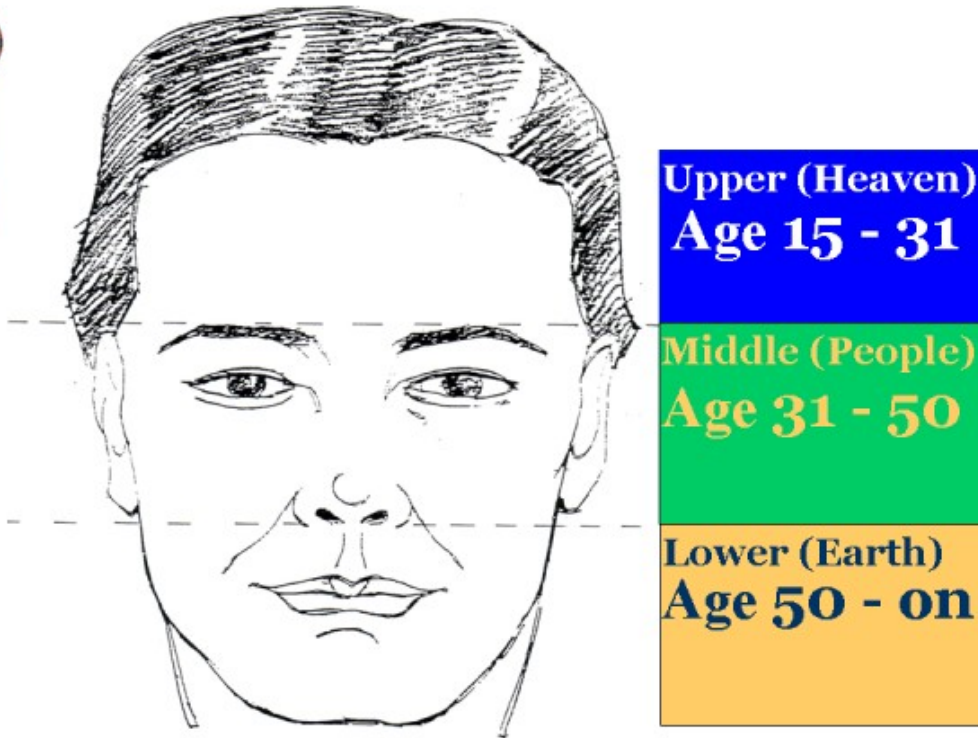
© 2005 American Feng Shui Institute

Qi is one of the most important aspects of face reading. Qi is the energy that brings life. It is the essential energy that gives us the ability to live. It is found in plants, animals, humans, and all living creatures. Without qi, there would be no life on Earth.

Qi in face reading is indicated by the color or brightness of the face. If the qi is not favorable, it can indicate problems. Also, the qi can have an overriding effect on certain times in your life. For example if the nose has a good shape, then between the ages of 41 and 50 things should be good. But if the face has bad qi, then the person will not have the good fortune that they might otherwise have gained.

The qi is very important. The more positive and attractive the qi, the better one's life will be. How can you determine the qi within a face? Good qi can be indicated by a good natural color and a certain shininess to the skin. It is this shininess that is very apparent in people who are naturally happy and have a good heart. You have often heard of people having a warm glow. This is their favorable qi.

Unfavorable qi is usually dull skin and often gray or ashen in color. This type of qi occurs when there is a heavy heart. It can also be apparent when there is a lot of stress and worry. Worry will create bad qi. Check yourself and your worries. Stop guessing too much and worrying about trivial things. The more happy you are, the better your qi will be.



© 2005 American Feng Shui Institute

### **The Three Divisions of the Face**

This diagram shows the face divided into three distinct areas. The areas are:

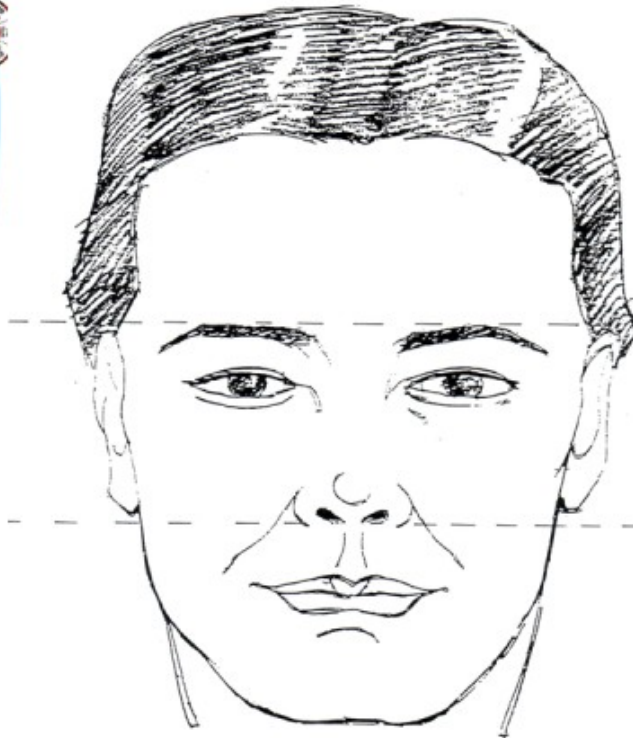
The Youth (aged 15 - 31)

The Middle years (aged 31 - 50)

The Older Years (51 - 100)

When looking at a face, you determine when things may occur by the face sections. The forehead relates to the youth. If it is uneven, then it is likely that the person had an unhappy childhood. The middle section relates to the middle years of one's life. If there are unsightly blemishes or marks in this area, then there will be difficulties in the middle years. The older years are represented by the mouth and jaw area. If you have blemishes or any marks, then you need to watch out. If you have a good face, clear of blemishes, smooth and proportional, then life will be good.

If looking straight at a person, if their face is relatively flat, then this person likely came from a good childhood and possibly from a wealthy family.



## Hairline to eyebrows (Li Trigram)

Represents the boss or superior.

If forehead is rough, bad or difficult early life.

Smooth and rounded indicates intelligence etc.

Laborers tend to have furrowed foreheads.

If there are pimples, your "boss" will be giving you trouble.

© 2005 American Feng Shui Institute

If you have taken Feng Shui, you will notice that the division of the face is like a trigram. The layout of the face is similar in arrangement of the Master Trigram. The forehead (top) is the li trigram, or fire. The middle section is the center or earth. The lower section is the Kan trigram, or water. The same things you find in Feng Shui trigrams also relate here. If the forehead is dark, this could indicate some danger. The top should be bright. If the lower section is a yellowish or gray, this could indicate water related danger. If the lower section is greenish in color, then watch out for food poisoning.



## Parts of the face

© 2005 American Feng Shui Institute

### **The Parts of the Face**

There are certain features of the face that hold different meanings. The eyes, nose, mouth, and ears are all important in face reading and each represent a different life aspect. The eyes and nose are the most important.

#### **The Nose**

The nose on the man represents his career or money. Similarly too, the wife's nose indicates the husband's career. As mentioned earlier, a garlic nose shows that one's life is prosperous. The areas on the outside of the nostrils are often referred to as the money bags. The larger these money bags, the more money the person can hold.

The nostrils are the money drain. The larger the nostrils, the more money can flow out. Ideally, nostrils should not be seen when looking straight at the person. If they can be seen, the person will then tend to enjoy spending money. Nostrils that are narrow can indicate that the person is frugal.

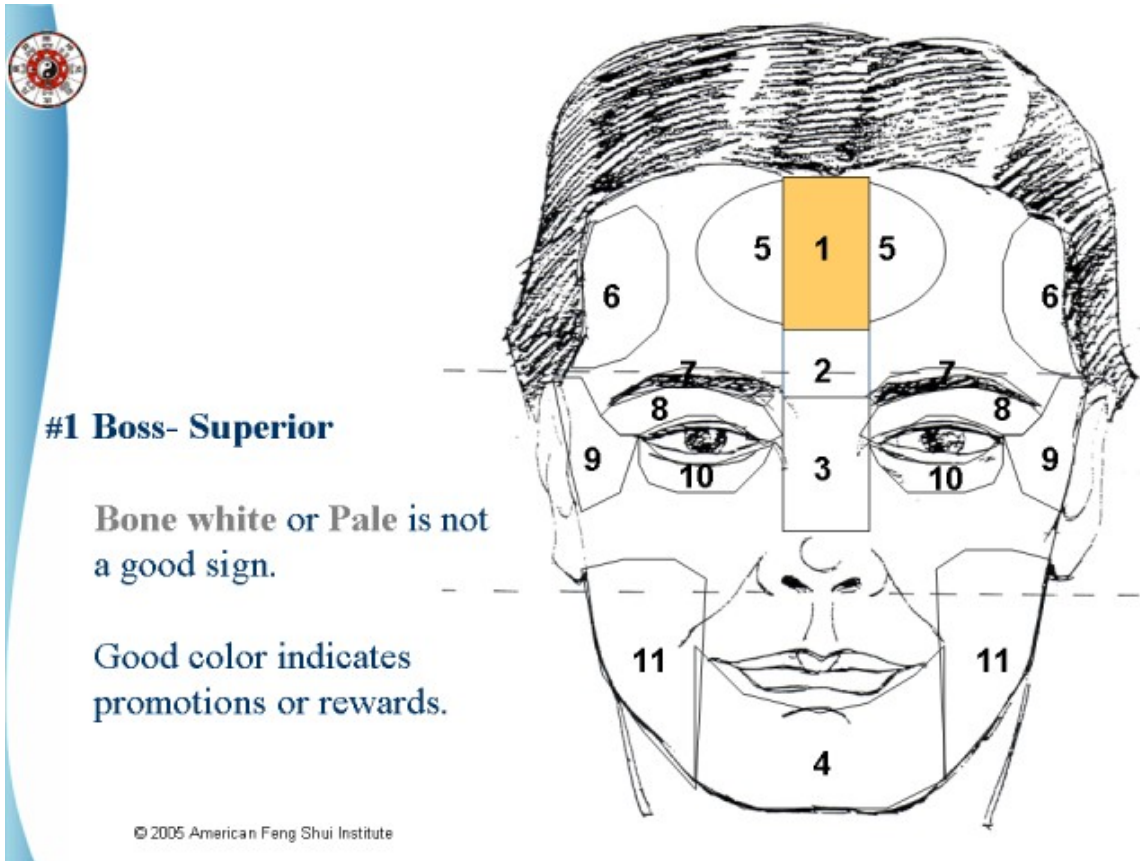
A nose that looks like a "lion's" nose is one that is thick and wide. This type of nose shows that the person has a fortunate money luck.

#### **The Eyes**

The area around the eyes represents the family. Also, the eyes are the direct insight into the person's nature and what they are thinking. Watery eyes can indicate peach blossom or romance. Watery and sleepy looking eyes can even indicate the ability to see ghosts! Eyes that are tired looking means that the person has difficulty saving money, and less energy.

## The Ears

The person's ears can indicate one's lifespan. The longer the ears, the longer the life. Also, ears can indicate intelligence. Especially ears that are above the eye brows. The more beautiful the ear, the more wealthy the family is.



Different areas of the face have different indications. On the following pages, we will look at specific areas of the face.

We will begin with the center of the forehead (the number 1). This area is considered the boss area. Certain colors in this area indicate certain things. If a person has this area showing ash white or bone white, then this indicates that there is not favorable news from your superior or from your boss. If there is good color over this area (a nice warm pinkish color), you can foresee a bonus coming.

Most of the time, when you read people, their colors are not so favorable. Most people have average colors. Some have unfavorable colors. This can change with time. The only way to clear these colors in the short term is through meditation or spiritual practice.

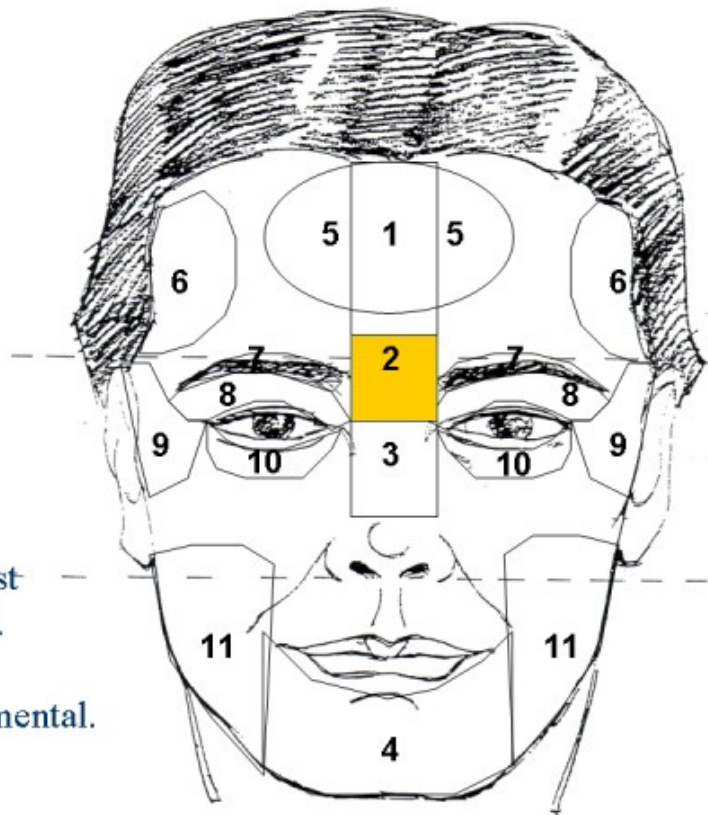


## #2 Our self.

How our luck is.

Too wide :cannot resist  
temptation.

Too narrow: temperamental.



© 2005 American Feng Shui Institute

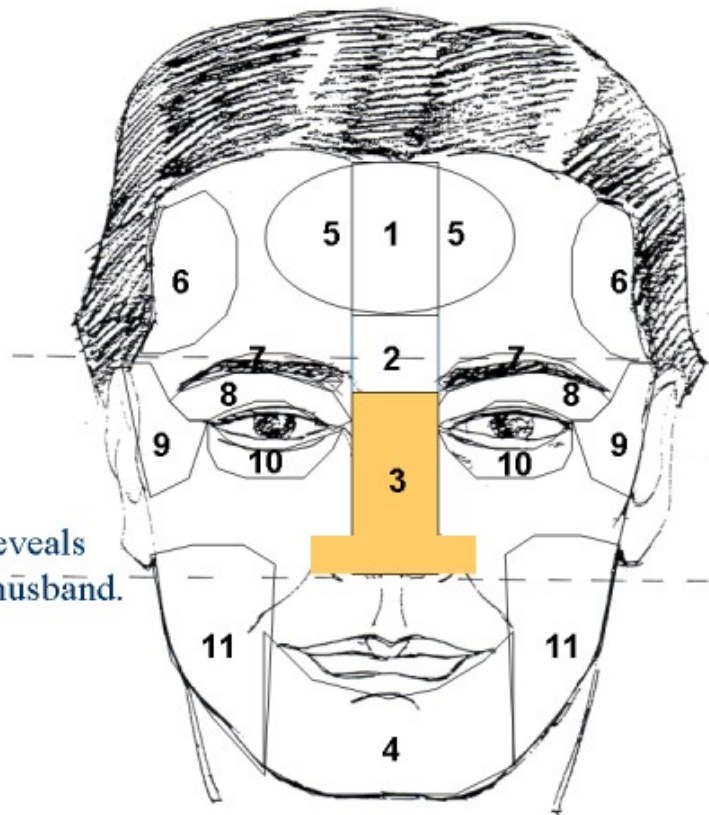
Different areas of the face have different indications. On the following pages, we will look at specific areas of the face.

The second area (#2) is your money luck. The easiest way to identify this area is to use two fingers. If your center brow is too narrow, you are easily irritated and easily agitated. If this area is too white, then you cannot resist temptation.



### #3 Money Luck

Sides of a lady nose reveals relationship with her husband.



© 2005 American Feng Shui Institute

The nose area (#3) reveals a lot about your money luck. This applies differently for a lady, in the sense that if she has a good nose, then she will have a good husband.

People often ask about cosmetic surgery and its effects. According to Master Sang, it can help, but because it is not natural, then it is not a dramatic change. Master Sang believes that it is more important to change yourself and then your face will change.

The nose covers the years 41-50. If by chance you have a broken nose, then at 46, you may have good luck, but at 47, your luck drops. This is because you have a scar or break in your nose.

The nose shows one's focus. If it is straight, then they are honest. If it is broken or irregular, then so is their thinking. This can also be verified by their body language.

A little secret is that on the bags of the nose, if you have a pink colored vein on the side of the nose, this can indicate peach blossom.

An eagle nose (a nose that is hooked) indicates a person who cares a lot about their own benefit. This person watches money very carefully.

The size of the nostril indicates how much you spend money. The smaller the nostril, the more you care about managing money. If you do not see the nostrils, then this indicates favorable money management. If a person has large nostrils, this can indicate big business dealings. If you can see the nostrils and they are large, then money flows away.

A flat nose means that they are not aggressive (or could be even lazy). If they have a pointed nose, then they tend to be more aggressive.

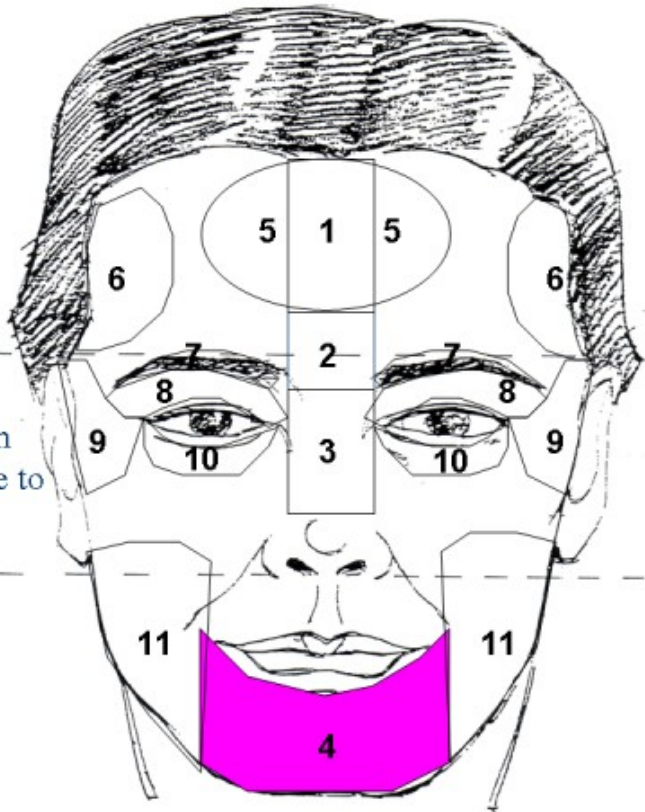


## #4 Supporters

How they are.

If this area is dark, possible drowning or accident related to water or to food poisoning.

If very good color appear, then some helpful person will come to help you either with money or business.



© 2005 American Feng Shui Institute

The number 4 area or the chin is the supporter area. The area's qi indicates how much support a person might receive. If this area is dark, it can indicate drowning or food poisoning. If this is a good color, then this can indicate helpful people. So be careful if you see someone going camping and they have a dark color in this area. This could indicate a water accident.

Below the nose indicates the years of 50+. This is the area that you can look for to read the indication of the older years.



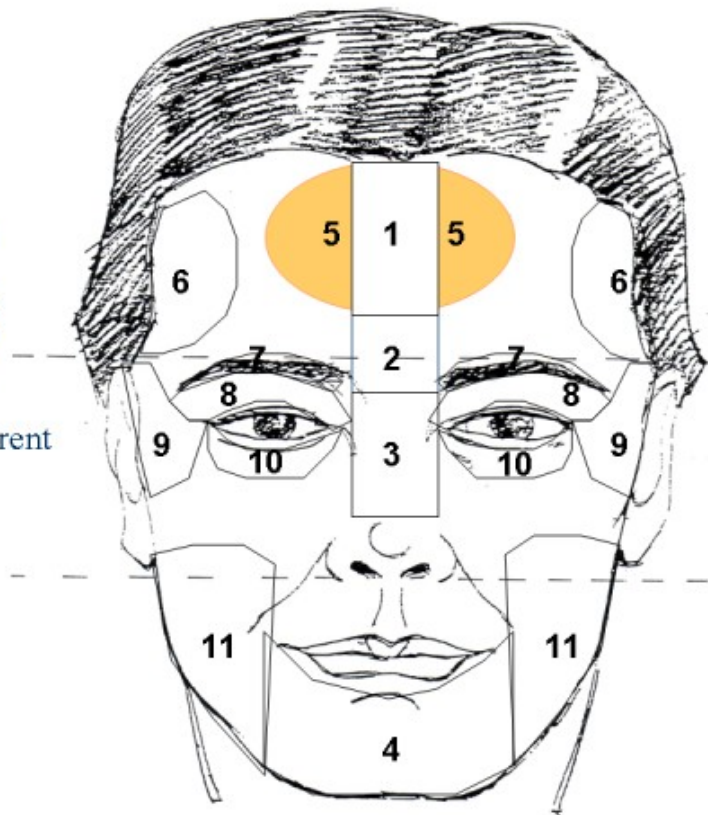


## #5 Parents

For male: Father (left)  
Mother (right)

For Female: Father (right)  
Mother (left)

If this part is **ash-white**, parent  
is sick or may die soon.



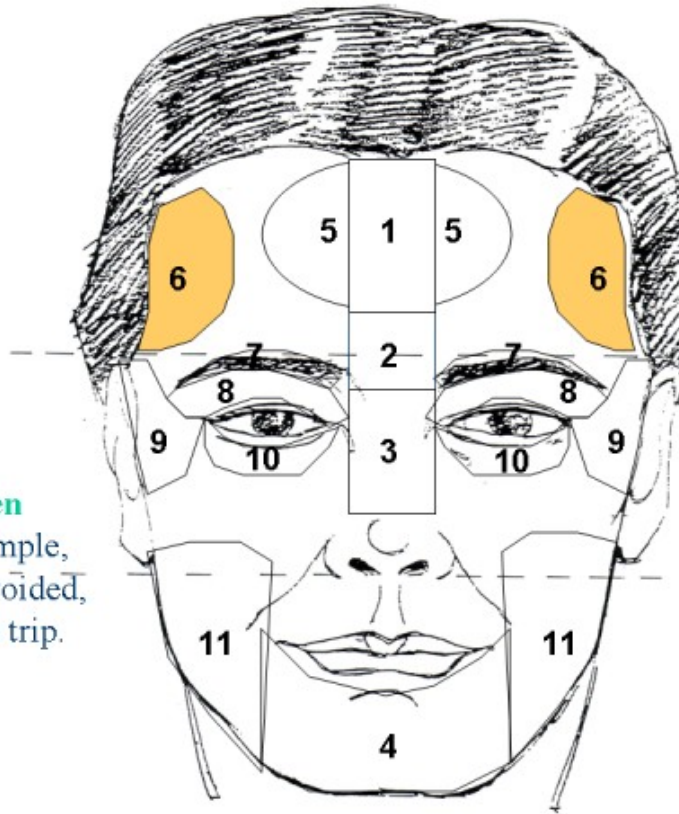
© 2005 American Feng Shui Institute

The #5 area indicates the father and the mother. Father is left and mother is right on a male. On a female, these two are reversed. The female will have indications of the mother on the left and the father on the right. If this area has a blue-green color, then parents should avoid traveling or getting into trouble. Even they are not in danger, they could suffer from the loss of documents. If this area has a good color, then it can indicate a long journey. Today though, people are always traveling, so it is not so important anymore.



## #6 Travel

If this area has a **Blue-green** color (**bruise color**) or a pimple, then traveling should be avoided, there will be trouble on the trip.



© 2005 American Feng Shui Institute

The number 6 area is the the outside of the forehead. This area often shows travel. If this area has a bluish green color, or any unsightly marks, then the person should not travel. If they do, there will be problems.

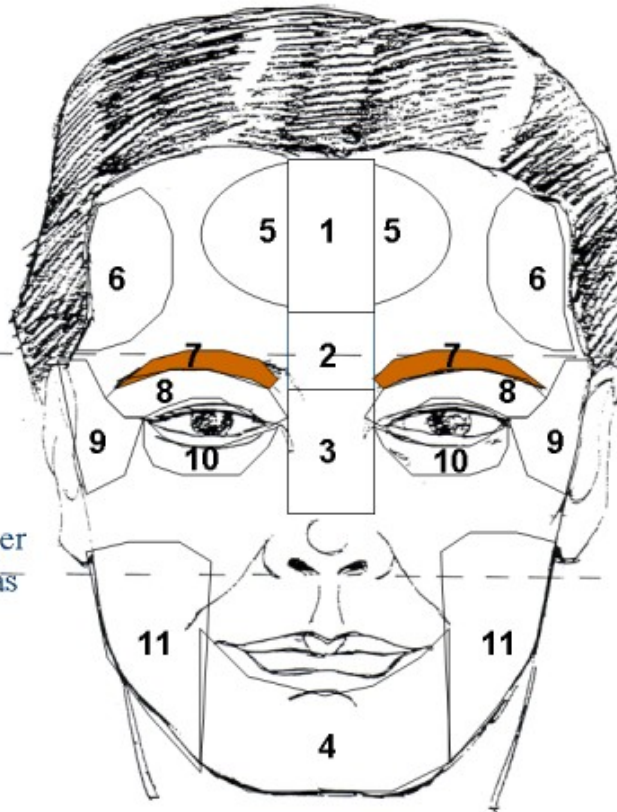


## #7 Siblings (Family)

Age 31-34

Broken eyebrows or scar means difficult to get along with brother/sister and hard to get support from them.

If eyebrows are uneven (one higher than the other one), this person has step or half siblings



© 2005 American Feng Shui Institute

The eyebrows are the sister and brother areas. (Area #7) The longer the eyebrow, the more support they receive from their siblings. If you have moles in your eyebrows, this is hidden treasure. A person with a mole in the eyebrow can be rich, but hides their money.

If there is a break in the eyebrows, this indicates an obstacle or difficulty with money. If the brows are really arched, then this indicates very artistic people. They can be very idealistic too.

If the person has thick eyebrows that stick straight up, then this person is prone to violence. If there is a scar or a broken area, during that age as indicated by the face reading, they are likely to have a divorce.



## #8 Property

Bad color shows potential loss of property. Exp: Robbery.

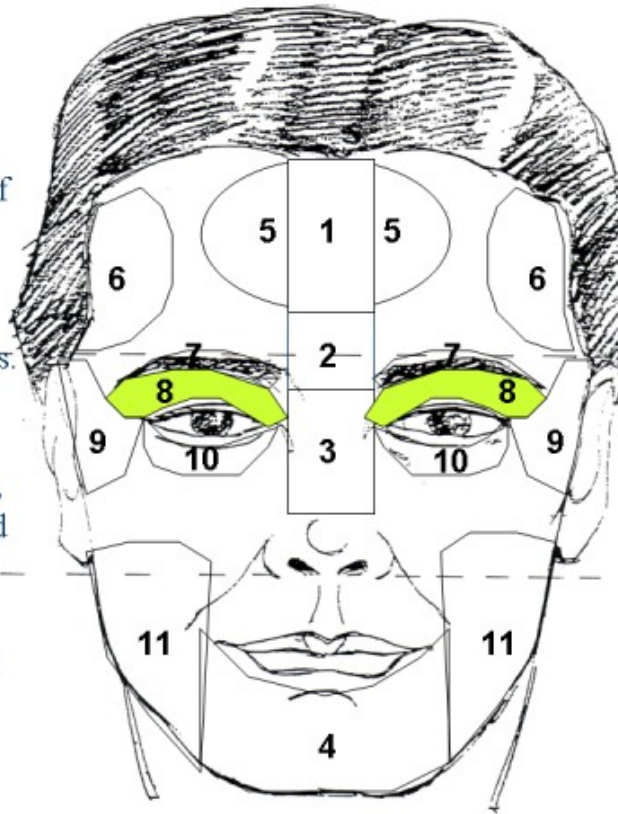
If this area is wide means the person may own many properties.

For a lady, if the space between her eye and eyebrow is too wide, she is easily cheated by male and can't resist temptation.

If narrow, the person is decisive, can make decisions easily.

If too narrow, it indicates that he/she is temperamental.

© 2005 American Feng Shui Institute



The area above the eyes (#3) indicates property. If this area is blue or dark, then there could be a problem such as a loss or break-in to the person's property. If the area is too narrow, then the person might be easily deceived.

The eyes should look sharp. Look at the eyes of famous people. If the eyes are beautiful, but mysterious, there is a potential to have difficulties. Look at the eyes and the nose. This will tell you everything.



## #9 Wife/Husband

This area tells about the wife/husband and mistress/lover.

Male (Left/wife, Right/Mistress)

Female (Left/Lover, Right/Husband)

Dark green means sickness or worry about his/her wife/husband.

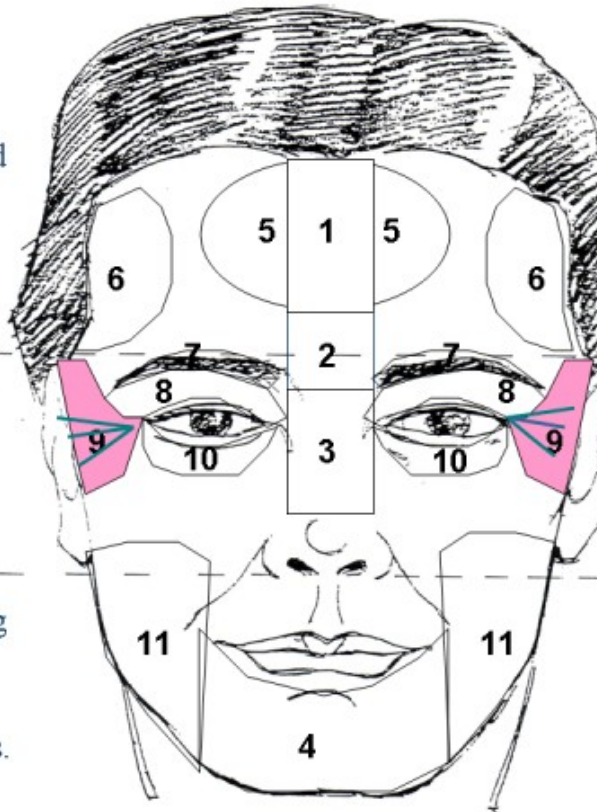
**Deep red** or purple means anger.

**Yellow (beige)**, Shiny oily in a young Male indicates impending marriage.

Fish tails indicates male after females.

The more lines, the more women.

© 2005 American Feng Shui Institute



The areas of the temples (#9) represents the spouse. If you see a new bride, the color is very shiny. If the area around the temple is shiny, then a boyfriend can show up. If you have a boyfriend, and the area is shiny, then you have a passionate relationship. If you are married, then you need to watch out for an affair.

If the opposite is true and the areas have a dark color, then the relationship is not good. If the husband and wife get into a big argument, and the husband has shiny temples, then there is a mistress. The left side shows the female on the male. On the female the right is the male. A mole or freckle appears in the right side temple on the wife, then the husband may be having a lot of difficulties.



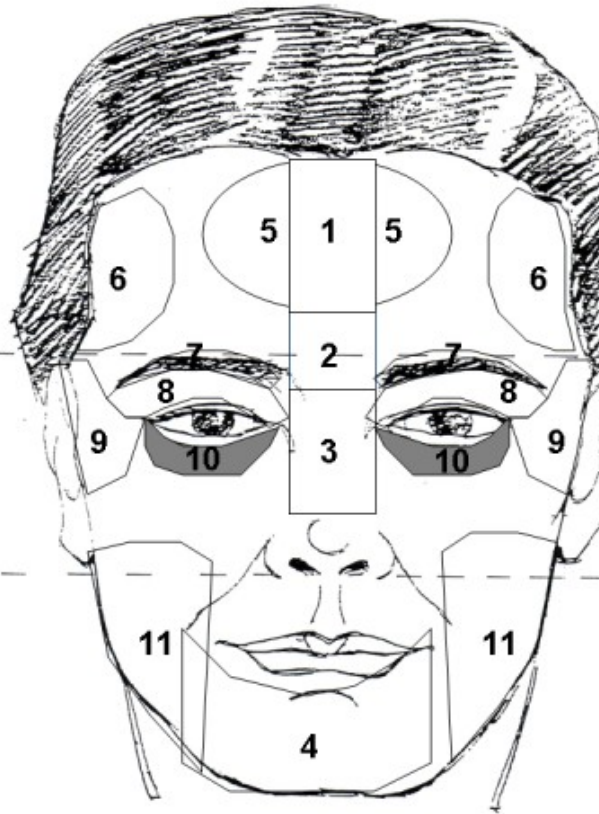
## #10 Children

If dark, Grey or Green color.

1. Not enough sleep
2. Too much sex.

If neither one of the above, means something dangerous is going to happen to the children.

If good color, such as Pink appear means going to have baby soon.



© 2005 American Feng Shui Institute

Generally, the areas around the eyes refers to family. The area below the eyes refers to children (#10). The more full this area is, the more opportunity to give birth. If the qi is not good, meaning that area below the eyes is dark or a greenish-gray, then an accident may occur involving the children. This can apply to step children or adopted children too. The only time this does not apply is if you are oversexed. Too much sex, or a lack of sleep can also create darkness under the eyes. Another exception is when a person is born with dark circles under their eyes. But, this only occurs in a small percentage of the population. If you do not have children, then a dark color under the eye could also indicate kidney problems. Too much sex, according to Chinese medicine, can hurt the kidneys. If you wish to practice face reading on your friends, never say these things with certainty.

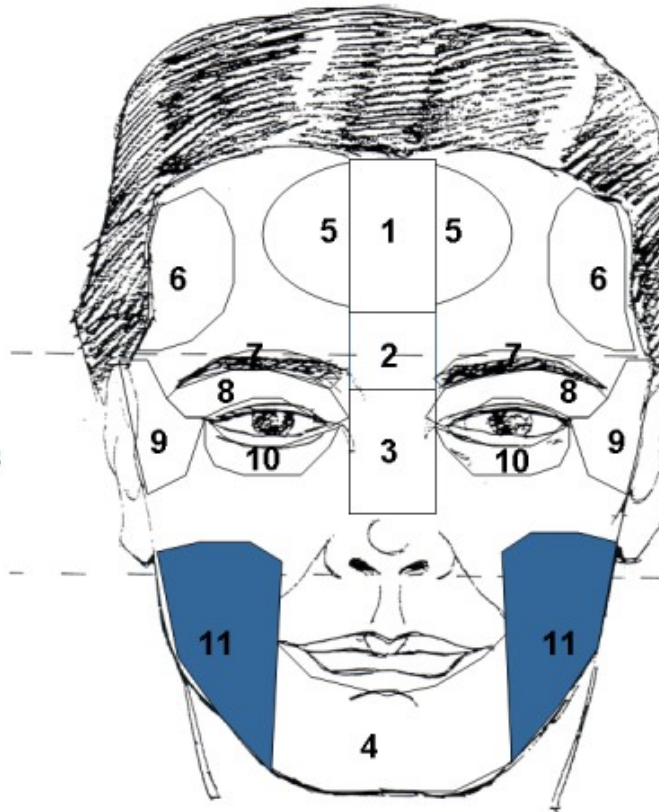


## #11 Staff

For teacher, it means your students.

For employer, it means your employees.

If the area has dark color means staff has problem or give you trouble.



© 2005 American Feng Shui Institute

The area around your lower cheeks (#11) indicates things about your staff or students. This area is also an area that reflects your employees. If the color is not good, then they are giving you problems.

Strangely enough, if you have a cut or problem on your chin (from the area of your lower cheeks through your chin, then you may have plumbing problems in your home. This can also include shaving injuries or other marks.



Heaven Support from parents

People He, himself is successful

Earth Support from the staff

**Three lines appear on the forehead.**

© 2005 American Feng Shui Institute

P.3

### **Distinctive Features on the Face**

In face reading the qi is of course very important, but there are other indications on the face that need to be considered. One of these indications are lines on the face. In this section we will discuss these lines.

In the slide above, the three lines indicate heaven, man, and earth. But they also represent from the bottom up: Eldest, Middle, and Youth. These lines represent the years of the three ages in our life. If you have all three lines clearly defined, then you have good fortune. A good youth line (the top line) indicate that your parents support you. The middle line indicates that your staff or supporters are helping you. In the older years, a good first or bottom line indicates that your children or others will support you.

If the lines are broken or dashed lines, then that period of the life is not that smooth and that person worries a lot. It also means that you do not get the necessary support. It can also mean that that person does not get along with their supporters. If the third line is broken, then it can also mean that they do not get along with their boss.

If you can change your thinking, you can affect this qi.

If all three lines are broken, then this person does not support him/her self. Another way of saying this is lazy. It can also indicate inconsistency. This can be a sign of a person that you should not marry. If there are more than three lines and they are broken, it can indicate that they are confused in life. You will often see this in laborers.

If there are no lines, this can indicate a big business owner.





Line between two eyes (Age 41)  
Means big trouble.  
Lawsuit from marriage, divorce.  
Upper line (Age 39) indicates mistress.

**Two lines between the eyes.**

© 2005 American Feng Shui Institute



**P.3**

In the figure above, the lines are at the ages of 41 or 42. if you have these lines, this is a time to watch out. It can indicate that in your life, you get involved with lawsuits. It can also be a marriage related lawsuit. It can indicate a divorce or separation.

A single line on the bottom of the bridge of the nose can indicate that you are separated, but that you might have a mistress outside. This typically occurs at 41 or 42.

Some people have a crossed line at their brow. At the ages of 41 or 42, you may face difficulty. Or if it comes out later in life, it still can indicate difficulty.

If there are two lines that appear like a v shape, then these people have unexpected luck in their life.

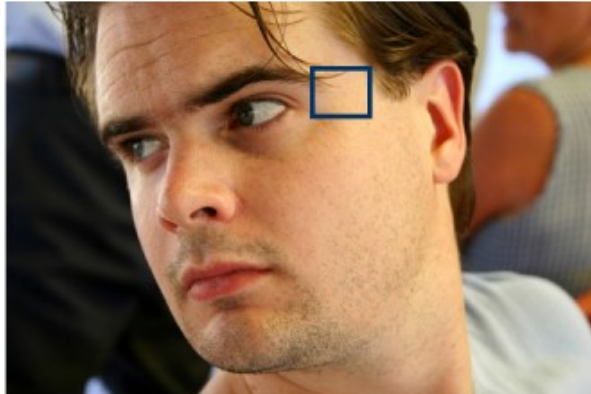
Two straight lines indicate that you may worry a lot about nothing.



On a man's face, this area tells about the wife and mistress.  
Dark green means sickness or worry of the wife.

(Left side/Wife, Right/Mistress)

Fish tails indicate male after female. More lines means more women.



**Color appears on the temple area.**

In the slide above, if there is shininess on a man, then the left side indicates wife and the right indicates mistress.

For a woman, the right is for husband and the left is for a lover.

If there is dark colors or greenish-gray on the spouse area, then there is sickness for the spouse.

Crows feet mean that you love peach blossom. Watery eyes and lots of fish tales (crows feet) mean that this person really enjoys and loves peach blossom. (Peach blossom is a poetic Chinese expression for affairs, passion, or romance.)



Possible drowning or  
accident related to water  
or food poisoning.

**Dark color appears on the chin**



The chin represents the trigram of Kan. Kan represents water. When the water area has dark qi, then there is a chance of a water disaster or food poisoning.

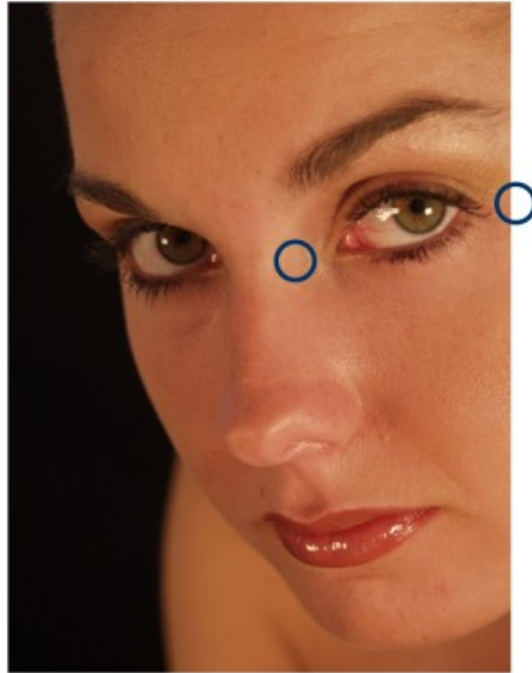


**For woman – Look at the area  
Along the sides of the bridges  
of the nose. The area tells  
About her husband.**

**Dull color, no qi means her  
husband is bad to her and  
causing her worry.**

**Good color, good qi, means  
Her husband is good to her.**

**Dull color  
at the bridge of nose**



If the area around the eyes for the female is dark or gray, this can indicate a difficult relationship with the husband. It can also indicate a problem with the husband such as abusiveness. This could work in reverse though. The nose represents money in the male, so he could be worrying about money.

If a new scar appears on the woman in this area, then the husband could be in danger.



If good color, full, puffy and she also has a big hips, means she will have children

**This area represent children**

© 2004 American Feng Shui Institute



The area below the eyes represents children. If the qi has good color then there are good relationships with the children or the person has many children. If the color is dark or grayish, then the children could be in danger.



**Line across bridge of  
Nose means at age 41  
will be a critical year  
for her.  
If slightly above the eye  
line means at age 39.**

**Line across bridge of nose.**

© 2005 American Feng Shui Institute



**P.4**

A single line across the brow in a man means that something will occur at age 41 or 42. but in a woman this line will show up at age 39. Remember that the Chinese count birth from year 1, so these ages are one year ahead in Western thinking. So when you are 5 in Western years, you are 6 in Chinese.

The single line can indicate a split or critical year for the person's relationship. A single line under the nose can indicate miscarriage or that the person will have a difficult time giving birth.



This indicate that this  
he puts lots of  
pressure on himself.



**Two Straight line parallel with the eyes**

© 2005 American Feng Shui Institute

A double line at the brow means that you are putting too much stress and pressure on yourself.



## **Mole or Dark spot**

### **Mole at the side of eyes**

Women like men  
younger than her.

For a good marriage,  
The husband should  
Be younger than her.



© 2005 American Feng Shui Institute

A mole at the side of the eye means that a woman likes men younger than herself. A woman like this usually has a younger lover.





## **Mole or Dark spot**

### **Mole under eye**

Worry from your child.



© 2005 American Feng Shui Institute

A mole at under the eye means that a woman has worries that come from her children. If someone has a mole like this then there is a high probability that they have another mole on their chest. If the left eye has this, then the right breast has a mole. If the right eye has a mole then it will show on the left breast

### **Regarding Moles**

Moles that you are born with always come in pairs. If you have a mole on your face, then there is another mole somewhere on your body. This is fun, but really useless. Master Sang ca see a mole on your face and can tell you if you have a mole on your hip, breast, or elsewhere. This is for fun information with which to impress people. This is not part of the scope of this class though it is an interesting fact to know.



## **Mole or Dark spot**

### **Mole on the chin area**

Trouble from staff



© 2005 American Feng Shui Institute

If there is a mole on your chin, then you have trouble from your employees or staff.



## Mole or Dark spot

### Mole on the nose

If the mole here with good qi, has a good husband. If bad, has a bad husband.

Mole below nose in middle of upper lip, maybe a twin or will have twins



© 2005 American Feng Shui Institute

If there is a mole on the nose, then this represents the husband and money luck. If the qi is good, then this is a prosperous time. If the qi is bad, then the money will be difficult during this time.

The image on the face can be changed by the heart. If you change your heart, then you will change your face and thus your life. Always have a merciful heart.



## Summary

- Observe the qi, including shininess and color
- Observe the eyes, nose, and mouth
- Observe the general shape of the face
- Examine if there are certain lines in the face
- Look for any blemishes, such as a mole, scar, or any other unsightly mark. Note where it is on the face.

© 2005 American Feng Shui Institute

The key things to remember in face reading is to observe the qi. If you observe the qi first, you will get a general indication of the feelings inside the person. If they are happy and things are going well for them, then the face will be shiny. If things are difficult and they have a lot of worries, then their face will be dull and possibly dark. The eyes are a key indicator of a person. They are the "windows to the soul" in both Chinese and Western thinking. They reveal a person's thoughts.

Take a larger look at the face before focusing in on specific marks. Look at the shape of the face, the attractiveness of the face, and the general condition of the face. Dark and dull faces have a lot of worry. Look at the lines in the face. Get an understanding of what these lines indicate. Observe the moles and other blemishes on the face. Note where they are and the ramifications of the area in which they appear.

Face reading is a fascinating study of the human life condition. If you are very observant, you will see the subtle indications of a person's life within their face. Some people can even provide face readings for a living. The most important thing to remember is to always speak positively to a person when providing them information about their face reading. Do not speak negatively. Do not say "at 42, you will get a divorce!" Rather, say "at 42, be very good to your wife." Face reading can indicate potential troubles, but with a change of heart the face can change too.

Most of all, play with this information and discover how it works. You will find it a lot of fun as you begin to read faces.